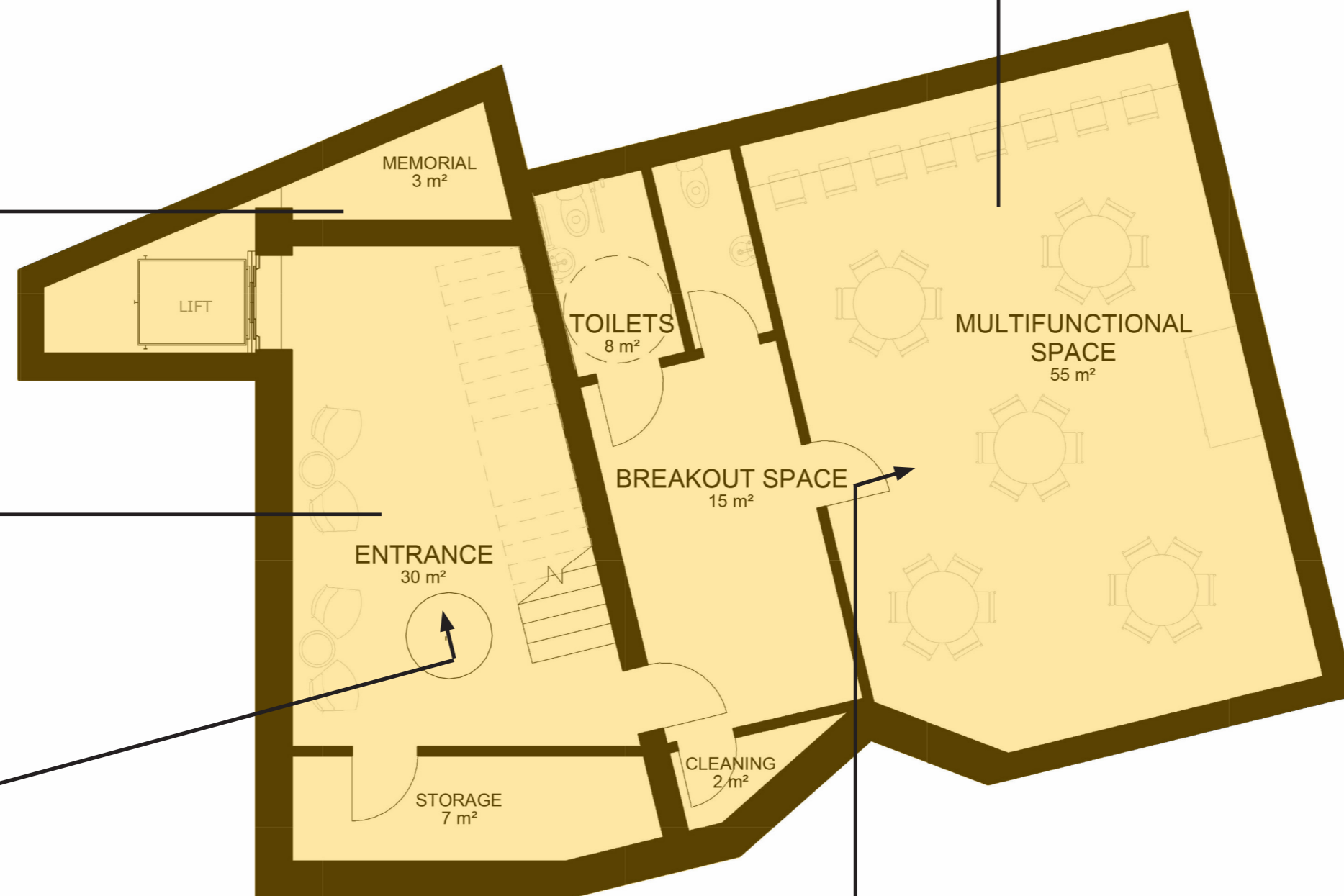




The proposed rear extension creates the opportunity for a basement that could be used for a variety of purposes. We envisage a youth space, a learning space, a place for quiet prayer and contemplation or a mix of all of these.

The remains from the excavation of the graveyard will be able to be reinterred in the new extension, so that they can stay in the place where they were originally buried. We want to honour the faithful believers who built our church down the years.

Additional spaces include an informal social area, a breakout space, toilets and storage.



Proposed Basement

View from entrance hall

View from door

