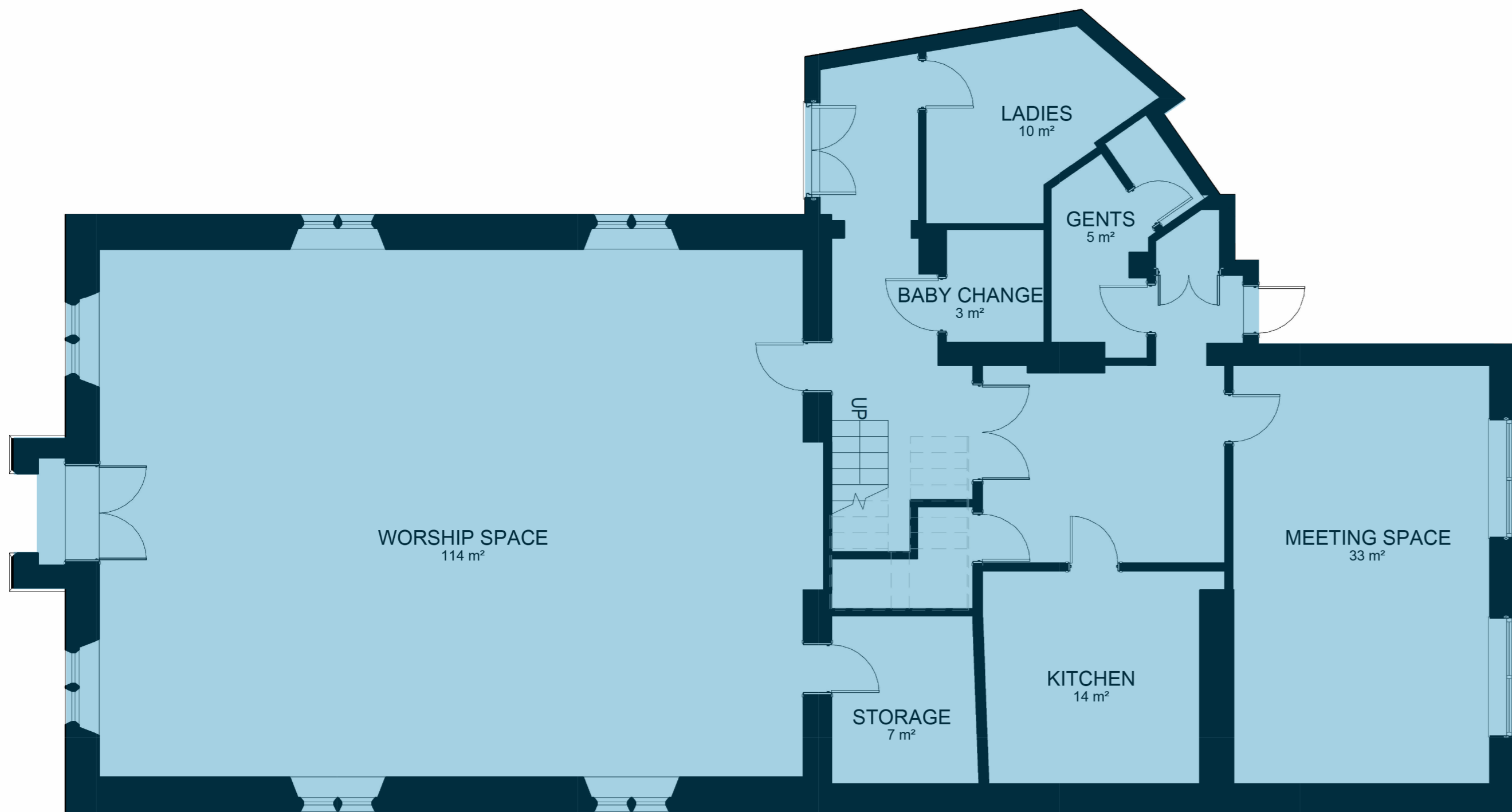




Main entrance lobby from the the door to Westgate car park



Artist's impression of how the new cafe space might be configured

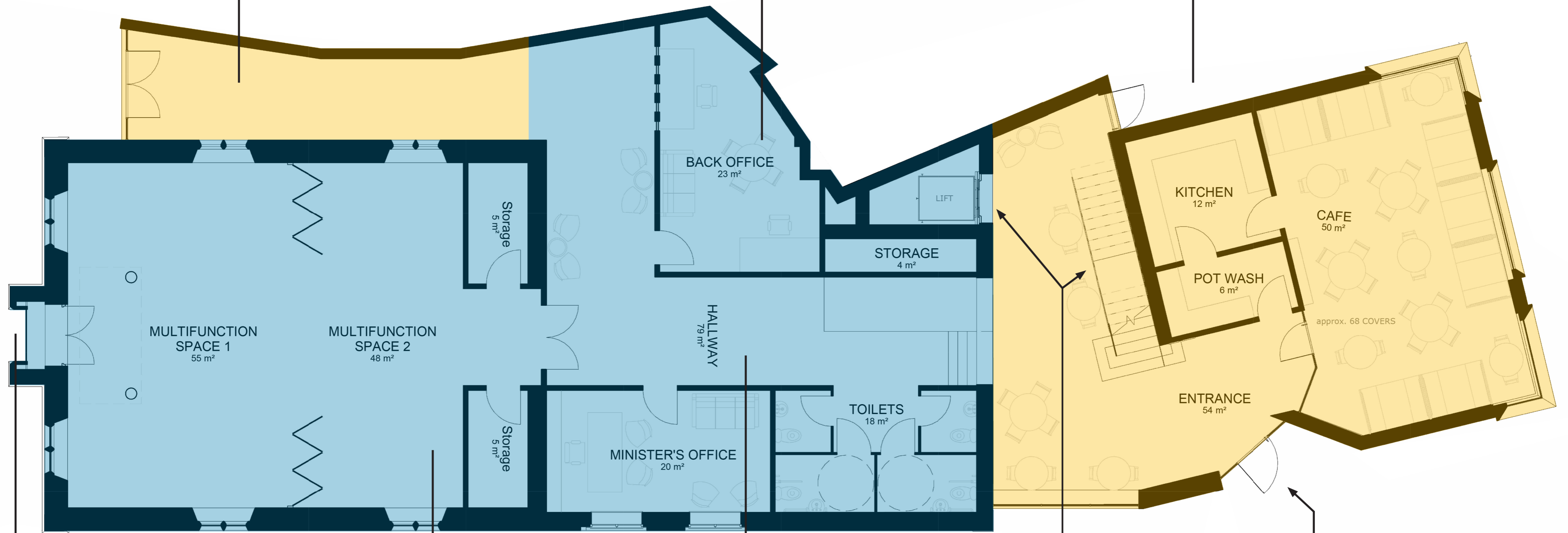


Existing Ground Floor

New main entrance from Melton Road with space to store bikes and pushchairs during public events and activities.

Back office area for staff and private meetings.

Proposed rear extension and relocated rear entrance door, kitchen and cafe area on the ground floor.



Proposed Ground Floor

Existing front entrance to be replaced with a window.

Flexible multifunctional spaces can be divided for coinciding activities.

Ground floor circulation offering wide hallways, public toilets, back office, storage and Minister's office.

The staircase and lift both go up to the worship space and meeting rooms and down to the basement.

New entrance door from Westgate car park.